

TWO VISIONS

THE WORLDS WE LIVE IN-BETWEEN

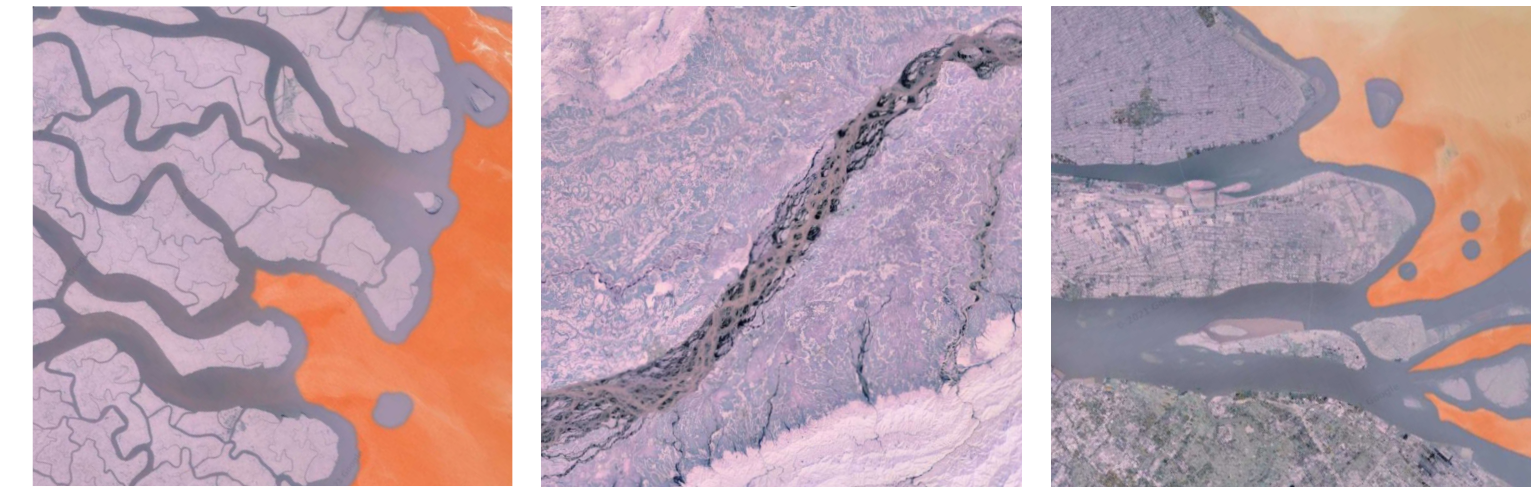
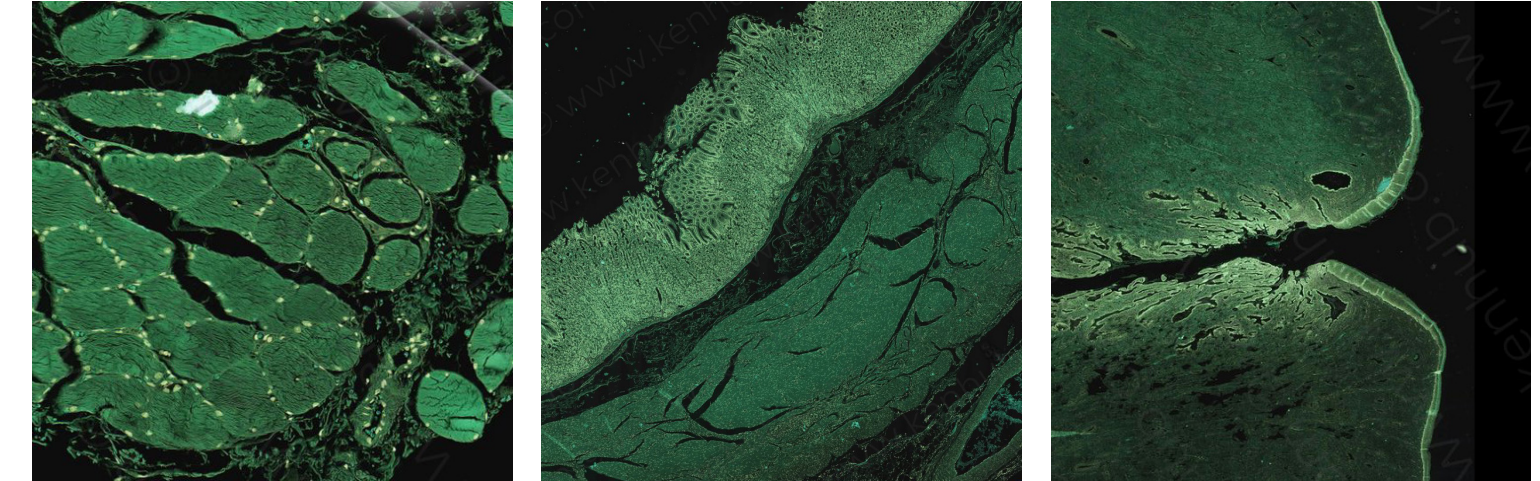
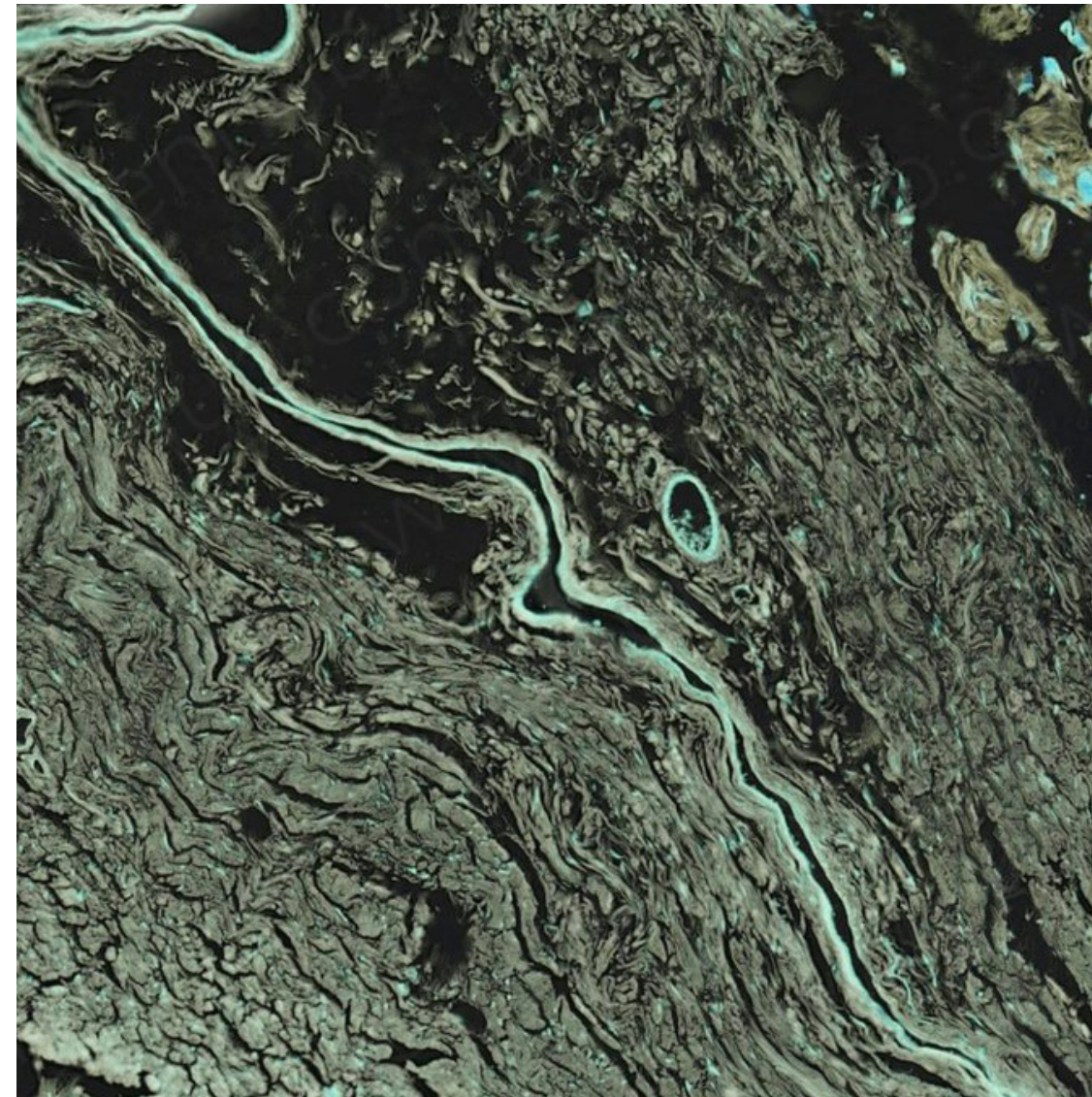
SHIYU LIU
ADPD '23
From CHINA
Currently in CAMBRIDGE, US

Departing from the world we touch,
to the very micro and macro perspectives,
we can find surprising similarities across scales.
The river passing through Bangladesh also winds its way in our veins and tissues;
The folds of the cerebral cortex extend as far as the Mizo Mountains.

This collection is to propose questions, not answers.
Is our body an ecosystem?
Does our planet live as an organism?
Could this new layer of intimacy inspire us to re-examine the way we inhabit?
How can we take better care of both under the threat of pandemics and climate change?

Technologies, such as microscopes and satellites, have brought human new visions of the world we live in. We can zoom in to travel in our body and can also zoom out to see the land as a whole. Diving into databases of histological sections and satellite images, I collected a dozen pairs of visually matched images and inverted the colors to further decontextualization. I hope that this juxtaposition and analogy across scales can bring us a new perspective to think about our body and our land in this particular era.

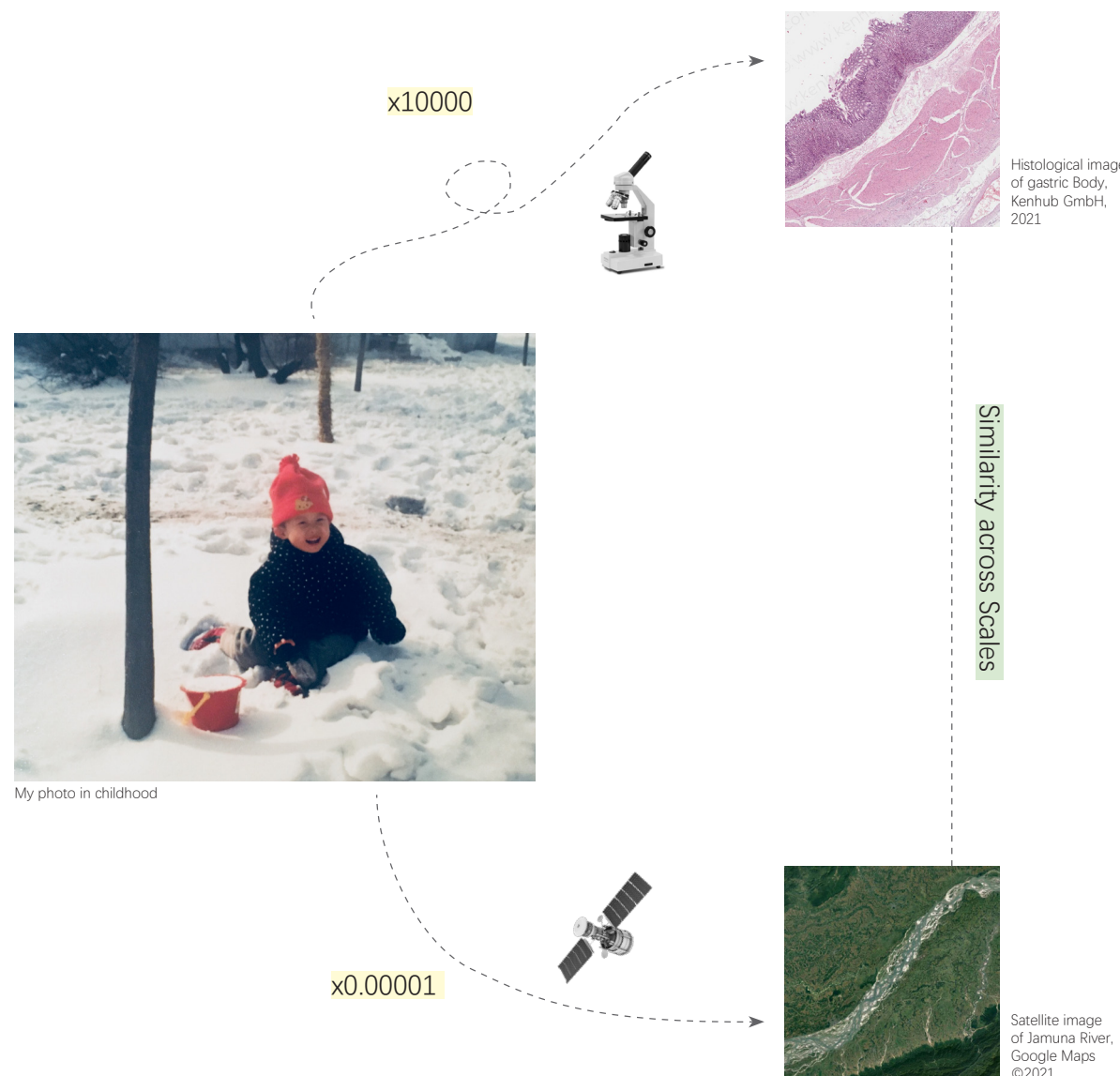
After building up this collection, I presented it to people from different backgrounds to invoke interdisciplinary discussions among ecology, psychology, health, and even physics. The topics, references, and recordings involved in the talks are collected and displayed on a website, forming a vast thinking space between the two visions.



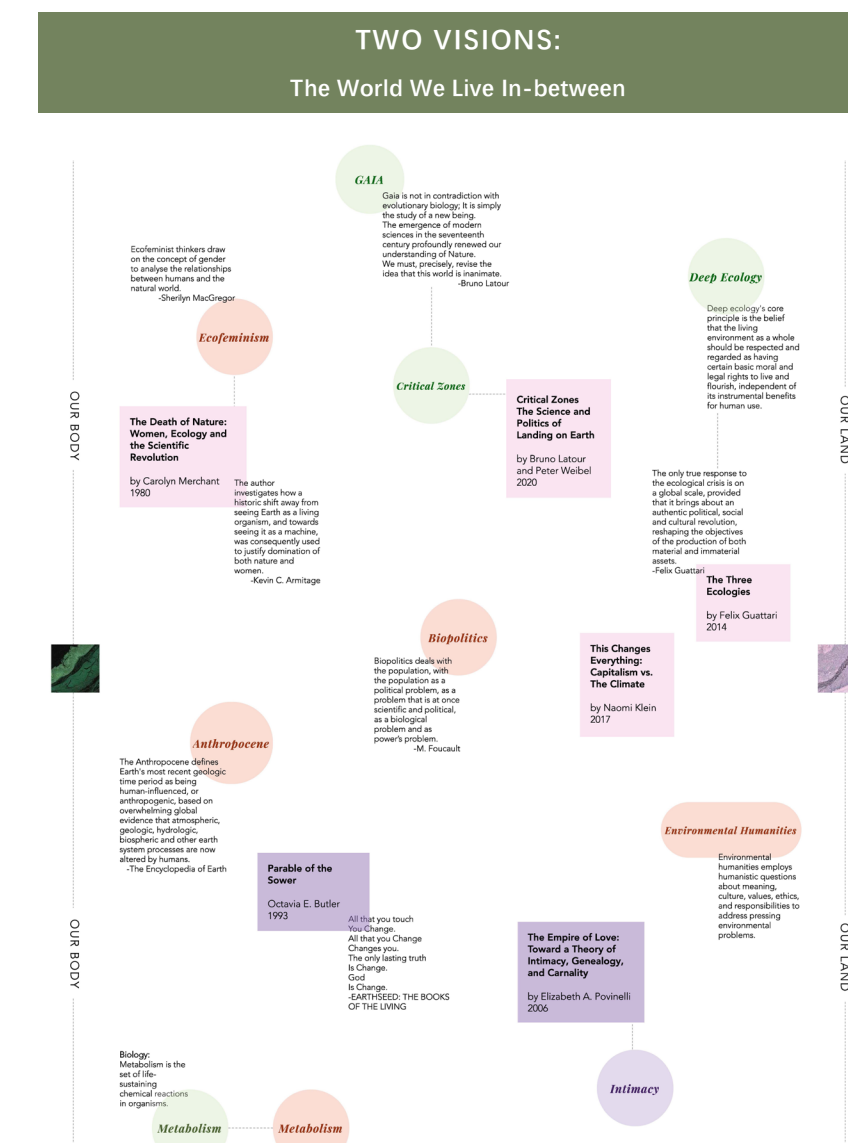
Up: Adipocyte, H&E Stained Histological Image (Inverted)
Below: Sundarban National Park, India, Satellite Image (Inverted)

Up: Gastric Body, H&E Stained Histological Image (Inverted)
Below: Jamuna River Basin, Bangladesh, Satellite Image (Inverted)

Up: Cervix, H&E Stained Histological Image (Inverted)
Below: The Yangtze River Estuary, China, Satellite Image (Inverted)



Up: Fornix of Lacrimal Sac, H&E Stained Histological Image (Inverted)
Below: Xiashui River Bands, China, Satellite Image (Inverted)



Sincere thanks to all the people who contributed in discussions:
Krzysztof Wodiczko, Robert Morris Levine, Malkit Shoshan, Nicole Piepenbrink, Jennifer Matchett, Kiwon Jeon, Aaron Appleton, Maggie Chen, Henry, Justin Ng, Ting Song, Liwei Shen, Yan Han, Shi Tang, Hongchang Zhu, Chloe, Xing Yang, Anyar.A.Saraydine, Shirui Wang, Clara Ye, Jinen Guo

For more information please visit the project website:
<https://www.shiyustudio.com/two-visions>

